

SURVEY UNIT,

MINISTRY OF HOUSING AND ENVIRONMENT

Ameenee Magu, Maafannu, Male', 20392, Maldives.

Office (PABX): +(960) 3004300, Fax: +(960) 3004301

Email: survey@mhe.gov.mv

Web: www.mhe.gov.mv



CONTROL POINT DETAILS		Station Number	PSM5478
Coordinate Information			
Geodetic		Grid	
WGS 84		UTM Zone 43	
Lat: 05° 49' 46.98233"		E: 301911.265	
Long: 73°12' 39.31354"		N: 644695.416	
Ellp Height: -84.7711		Orth Height: 1.005M	
Date: 27th January -02 December 2012			

Monument description & method of survey:

The topographic survey of N.Fushivellavaru island resort (inclusive of low, mean, high tide, land marks and vegetation) was conducted by total station.

PSM5478 was to be established in the island to Type A monument. Then control survey was done around the island by using the traverse kit stated above. All the PSM were occupied on the traverse and was calculated. Then the magnetic north of the island was taken by using the magnetic compass. PSM5478 level and the water level was recorded and then related to the mean sea level, which was determined after an analysis of local tide. The horizontal coordinates (X, Y, Z) of the PSM of the island was determined by using the GPS.

Note: Beach Rock Surveyors have informed to the N.Fushivellavaru management that PSM5478 is a property of land surveying authority of Maldives (MLSA). If the management of N.fushivellavaru want to do make any modification to the area or to the PSM5478, N.Fushivellavaru management must inform MLSA prior to the modification. N. Fushivellavaru management must be responsible to any damaged to the PSM5478.

General site condition & access:

- PSM5478 was to be established in the vegetation line of the island.
- PSM5478 is located in end of the spa jetty. Spa jetty is connected to the ring road which is found around the island.
- PSM5478 is located in an area which is easy to access and locate.

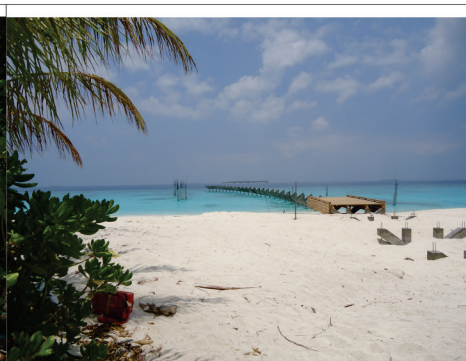
Owner: N.FUSHIVELLAVARU



DOWN TOWARDS PSM5478



PSM5478 NORTH VIEW



PSM5478 SOUTH VIEW



FROM PSM5478 UP TOWARDS SKY



PSM5478 EAST VIEW



PSM5478 WEST VIEW

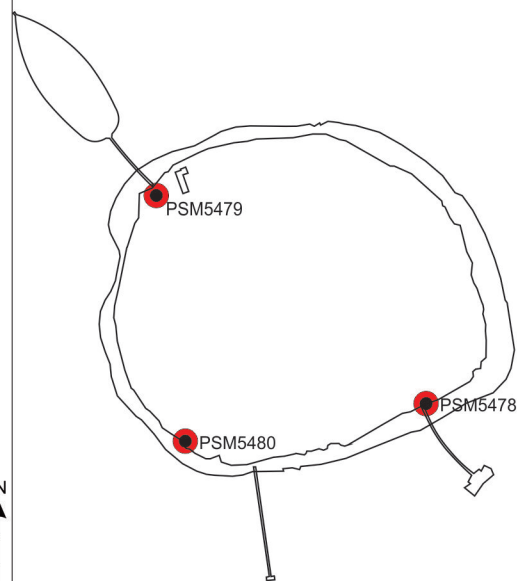
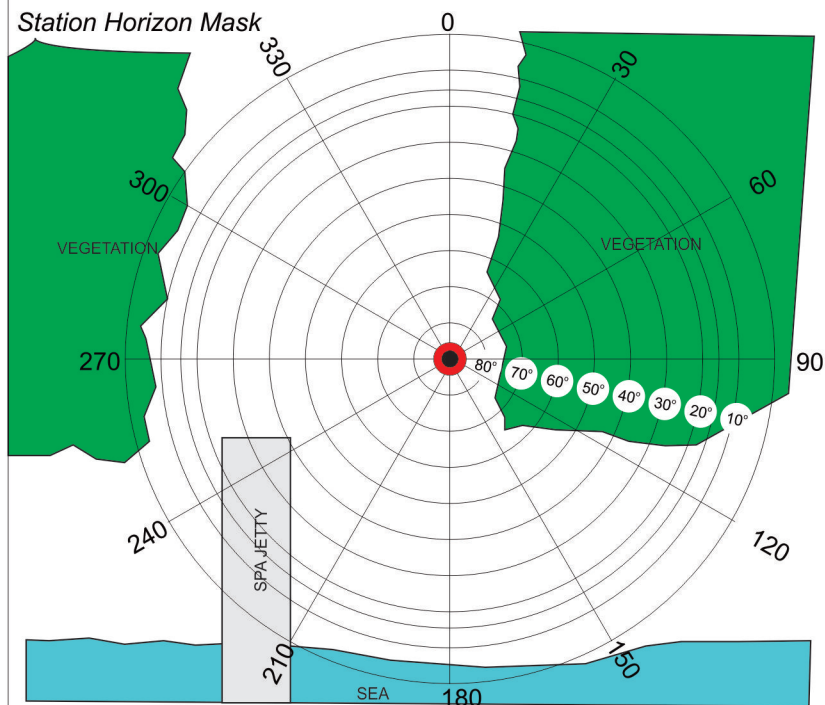
SITE INFORMATION

Station Number

P S M 5 4 7 8

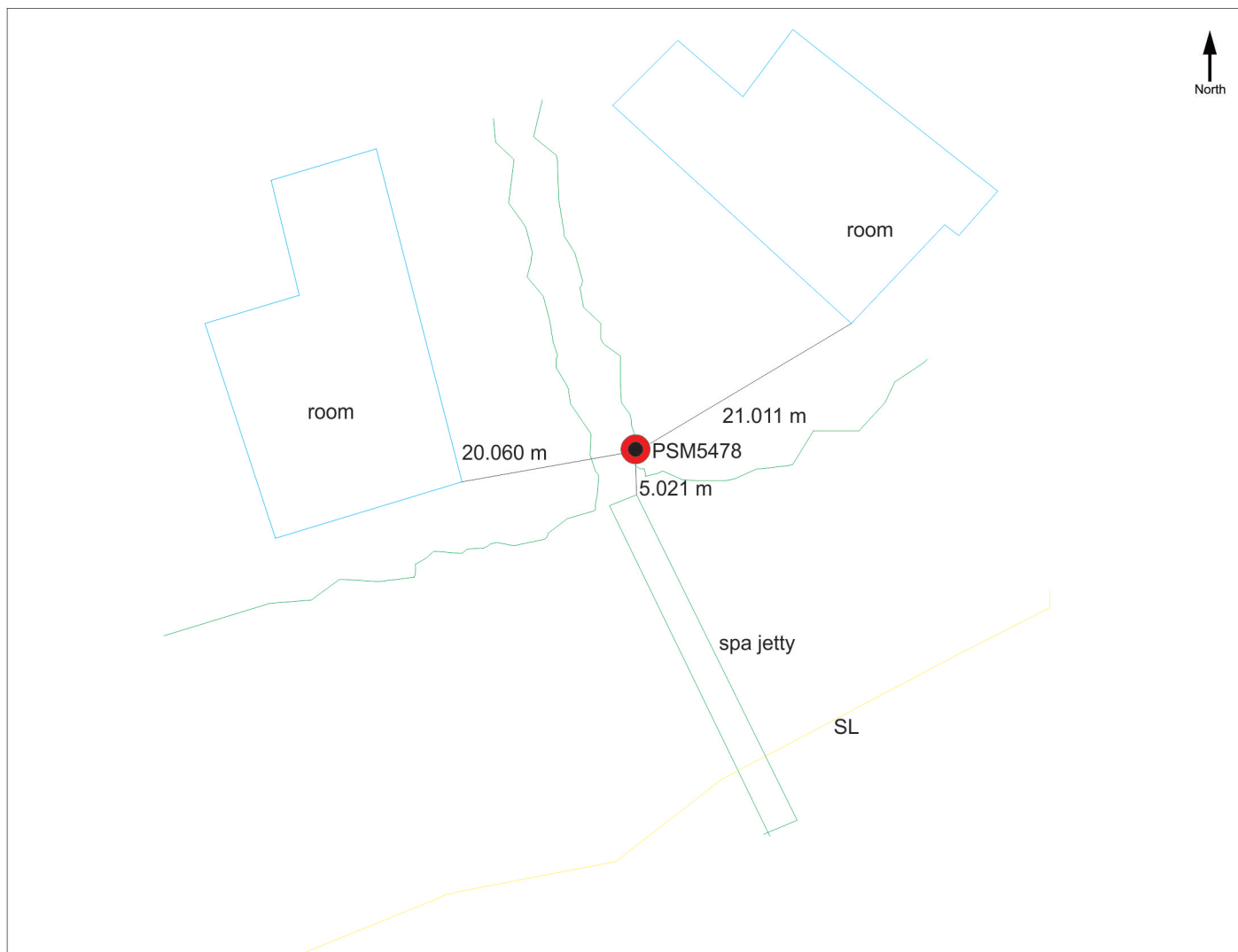
Station Horizon Mask

Locality



Height above Marker that horizon was mapped from 1.500 m

Magnetic Declination
Declination applied to this figure?
☐ Yes ☒ No



Sketched by: ALI MUBEEN (B)

Scale: Not to scale

Date: 05 December 2012

SURVEY UNIT,

MINISTRY OF HOUSING AND ENVIRONMENT

Ameenee Magu, Maafannu, Male', 20392, Maldives.

Office (PABX): +(960) 3004300, Fax: +(960) 3004301

Email: survey@mhe.gov.mv

Web: www.mhe.gov.mv



CONTROL POINT DETAILS

Station Number PSM 5479

Coordinate Information

Geodetic

Grid

WGS 84

UTM Zone 43

Lat: 05°49' 56.30590"

E: 301548.000

Long: 73°12' 27.47649"

N: 644983.000

Ellp Height: -85.9843

Orth Height: 2.379CM

Date: 27th January -02 December 2012

Monument description & method of survey:

The topographic survey of N.Fushivellavaru island resort (inclusive of low, mean, high tide, land marks and vegetation) was conducted by total station. PSM5479 was to be established in the island to Type A monument. Then control survey was done around the island by using the traverse kit stated above. All the PSM were occupied on the traverse and was calculated. Then the magnetic north of the island was taken by using the magnetic compass. Level was transferred from PSM5480 by using an auto level. The horizontal coordinates (X, Y, Z) of the PSM of the island was determined by using the GPS.

Note: Beach Rock Surveyors have informed to the N.Fushivellavaru management that PSM5479 is a property of land surveying authority of Maldives (MLSA). If the management of N.fushivellavaru want to do make any modification to the area or to the PSM5479, N.Fushivellavaru management must inform MLSA prior to the modification. N. Fushivellavaru management must be responsible to any damaged to the PSM5479.

General site condition & access:

- PSM5479 was to be established in the vegetation line of the island.
- PSM5479 is located in end of the spa jetty. Spa jetty is connected to the ring road which is found around the island.
- PSM5479 is located in an area which is easy to access and locate.

Owner: N.FUSHIVELLAVARU



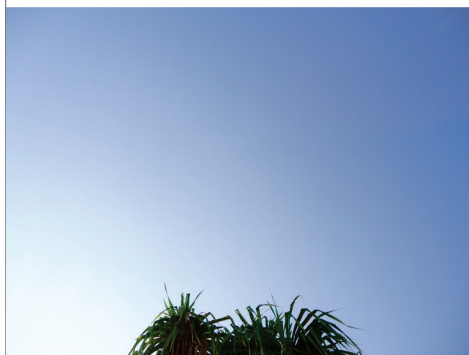
DOWN TOWARDS PSM5479



PSM5479 NORTH VIEW



PSM5479 SOUTH VIEW



FROM PSM5479 UP TOWARDS SKY



PSM5479 EAST VIEW



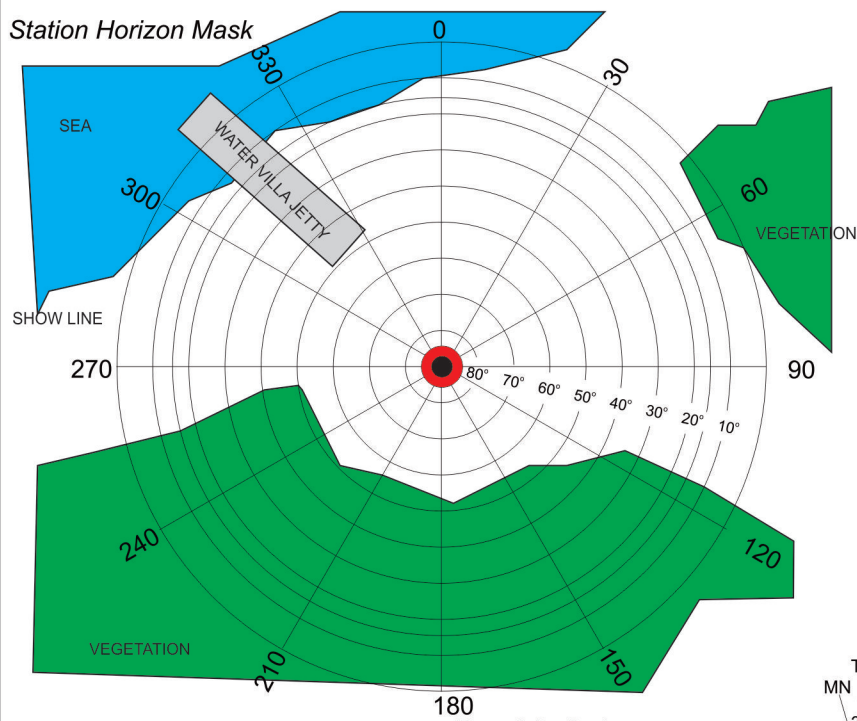
PSM5479 WEST VIEW

SITE INFORMATION

Station Number

P S M 5 4 7 9

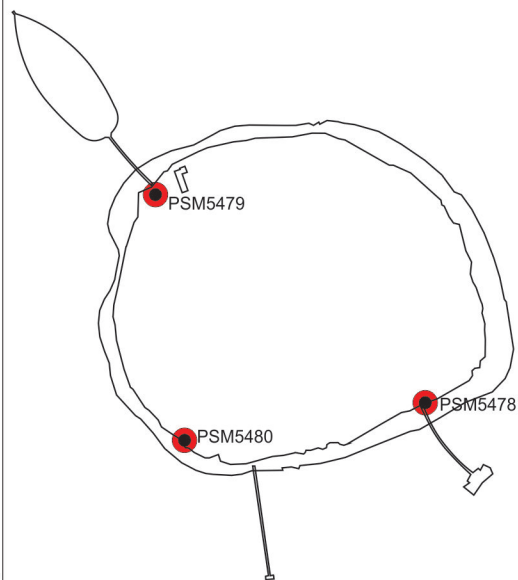
Station Horizon Mask



Height above Marker that horizon was mapped from 1.500 m

Magnetic Declination
Declination applied to this figure?
☐ Yes ☒ No

Locality



Sketched by: ALI MUBEEN (B)

Scale: Not to scale

Date: 05 Dec 2012

SURVEY UNIT,

MINISTRY OF HOUSING AND ENVIRONMENT

Ameenee Magu, Maafannu, Male', 20392, Maldives.

Office (PABX): +(960) 3004300, Fax: +(960) 3004301

Email: survey@mhe.gov.mv

Web: www.mhe.gov.mv



CONTROL POINT DETAILS

Station Number PSM 5480

Coordinate Information

Geodetic

Grid

WGS 84

UTM Zone 43

Lat: 05° 49' 45.22235"

E: 301585.131

Long: 73° 12' 28.71856"

N: 644642.383

Ellp Height: -84.4530

Orth Height: 1.481CM

Date: 27th January -02 December 2012

Monument description & method of survey:

The topographic survey of N.Fushivellavaru island resort (inclusive of low, mean, high tide, land marks and vegetation) was conducted by total station. PSM5480 was to be established in the island to Type A monument. Then control survey was done around the island by using the traverse kit stated above. All the PSM were occupied on the traverse and was calculated. Then the magnetic north of the island was taken by using the magnetic compass. Level was transferred from PSM5478 by using an auto level. The horizontal coordinates (X, Y, Z) of the PSM of the island was determined by using the GPS.

Note: Beach Rock Surveyors have informed to the N.Fushivellavaru management that PSM5480 is a property of land surveying authority of Maldives (MLSA). If the management of N.fushivellavaru want to do make any modification to the area or to the PSM5480, N.Fushivellavaru management must inform MLSA prior to the modification. N. Fushivellavaru management must be responsible to any damaged to the PSM5480.

General site condition & access:

- PSM5480 was to be established in the vegetation line of the island.
- PSM5480 is located in end of the spa jetty. Spa jetty is connected to the ring road which is found around the island.
- PSM5480 is located in an area which is easy to access and locate.

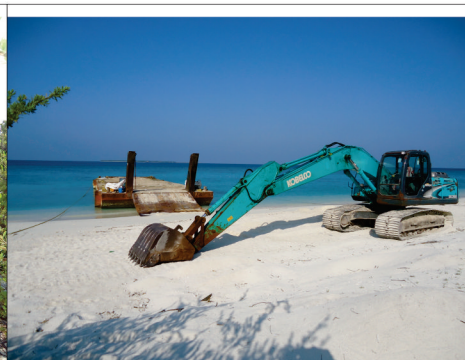
Owner: N.FUSHIVELLAVARU



DOWN TOWARDS PSM5480



PSM5480 NORTH VIEW



PSM5480 SOUTH VIEW



FROM PSM5480 UP TOWARDS SKY



PSM5480 EAST VIEW



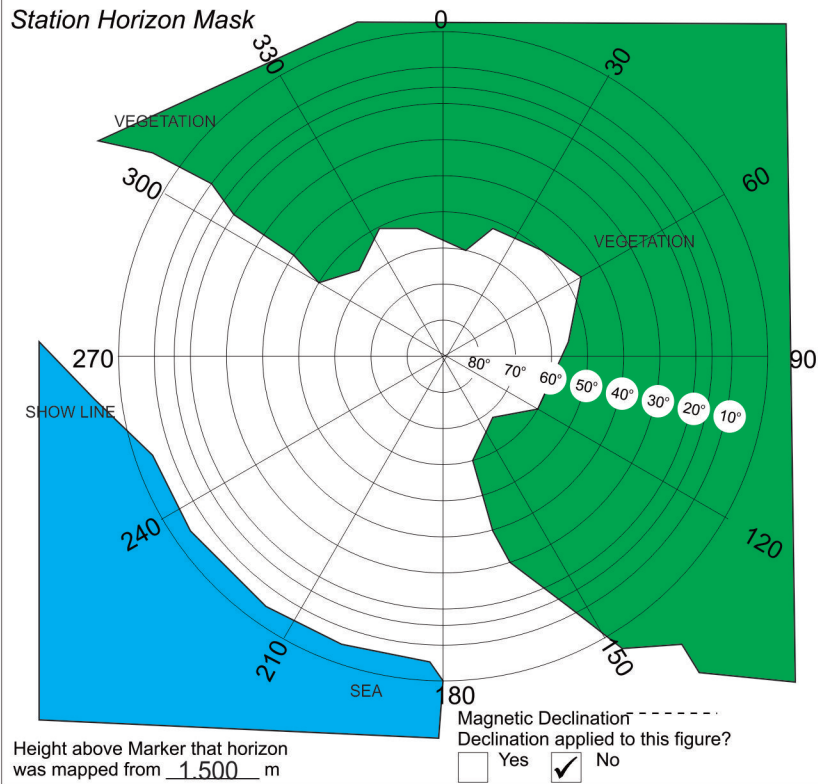
PSM5480 WEST VIEW

SITE INFORMATION

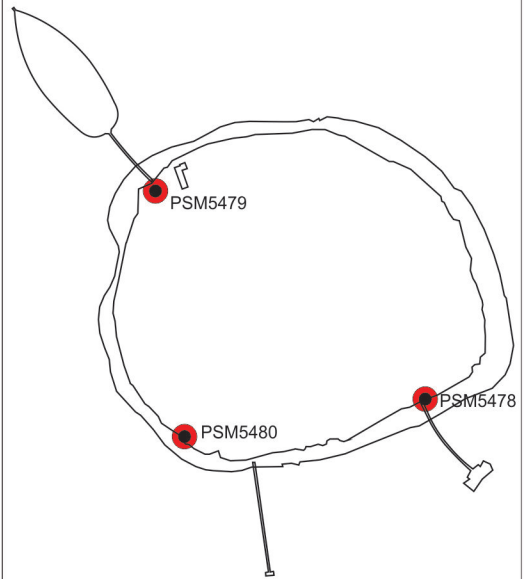
Station Number

P S M 5 4 8 0

Station Horizon Mask



Locality



PSM5480

100.557m

212.988m



Sketched by: ALI MUBEEN (B)

Scale: Not to scale

Date: 05 Dec 2012